

ClubSport Porsche 918 RSR Wheel Conversion PCB Installation Instructions



Thank you for the purchase of the Fanatec Standalone Conversion PCB, this guide will talk you through the installation of the PCB into the Fanatec Porsche 918 RSR wheel.

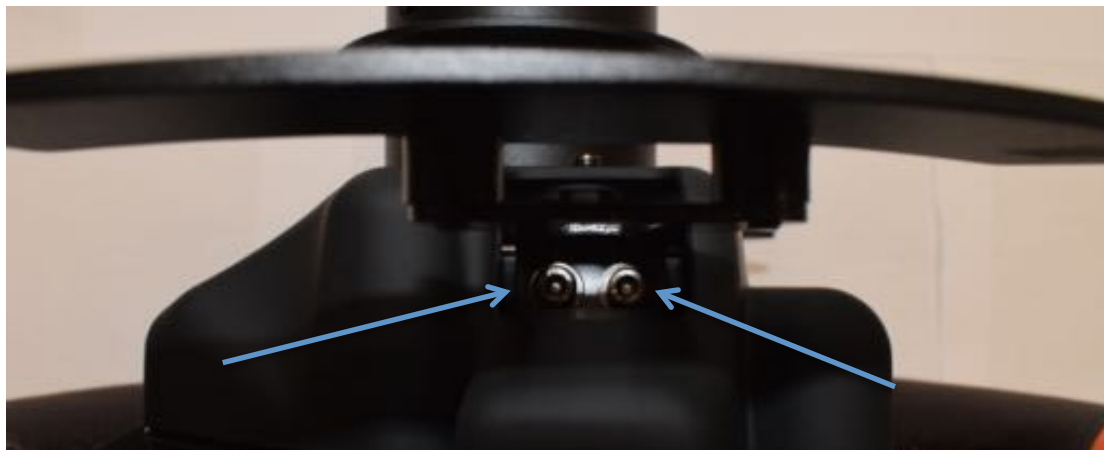
Caution:

This may void your warranty of the Fanatec Porsche 918 RSR wheel.
This is a reversible modification, however any holes drilled in the plastic case can't be reversed.

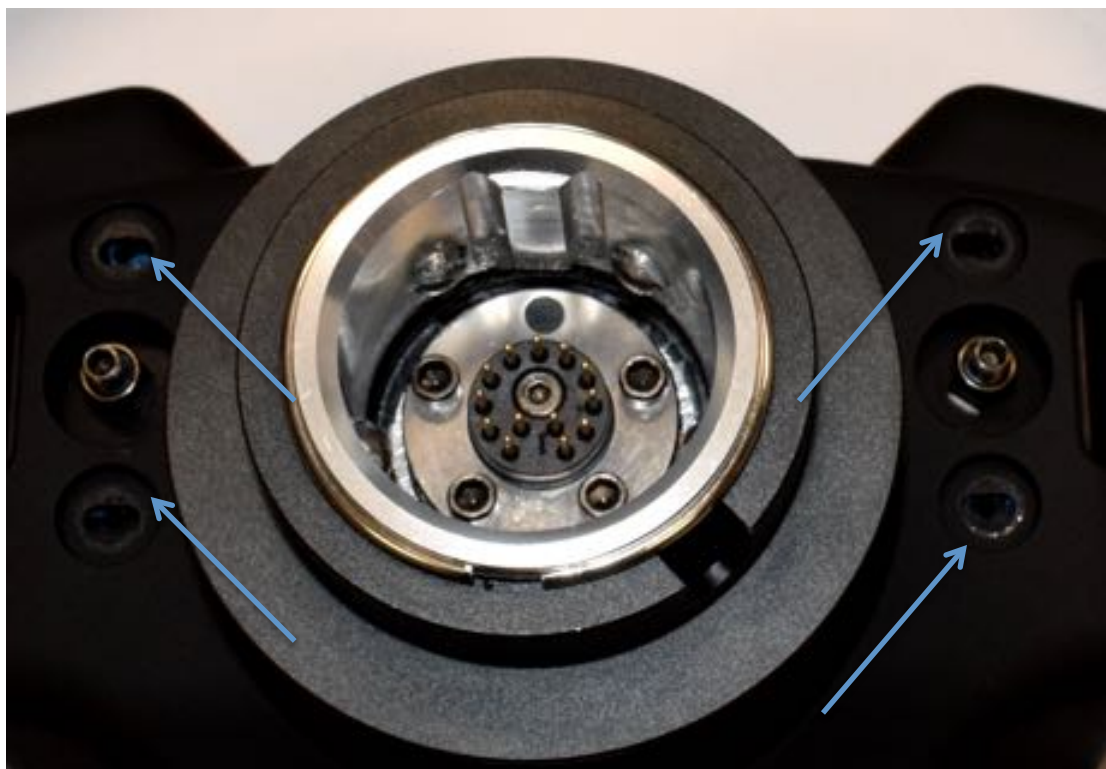
1. Place the wheel on its front as shown.



2. Remove the paddle shifters with a hex tool. There are two hex screws per paddle.



3. Then remove the four screws for the outer case and remove outer case to reveal the insides.



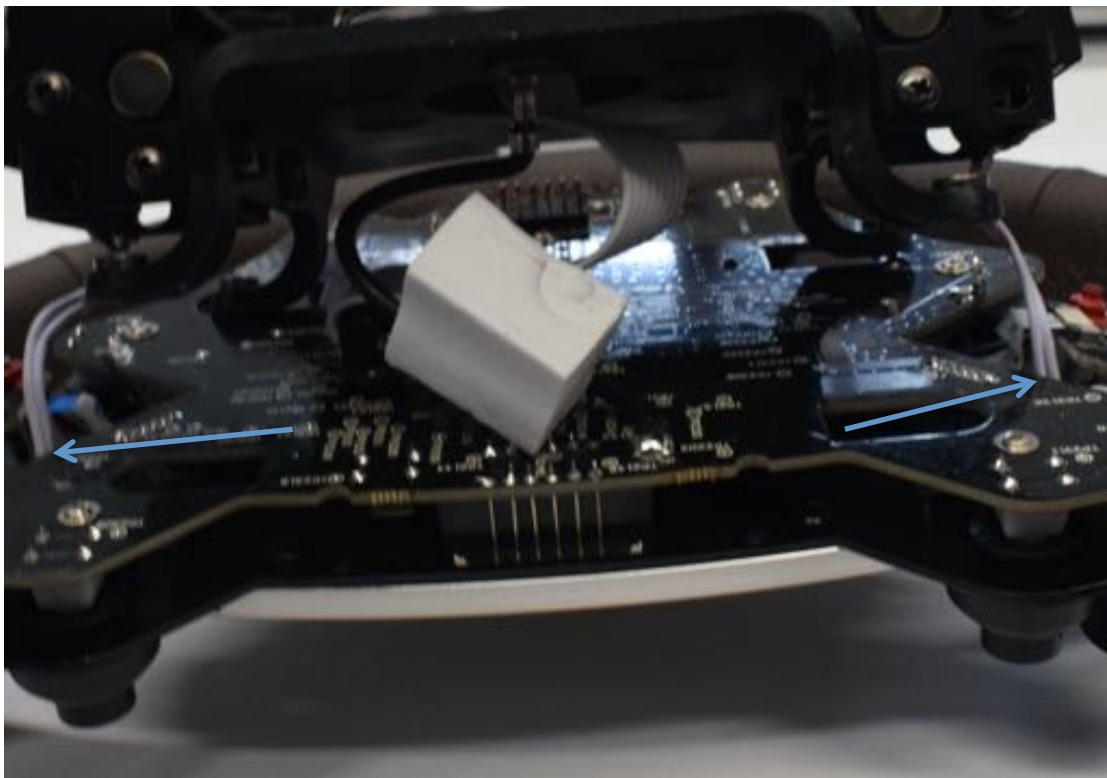
With the case and paddles removed. The Wheel should look like this:



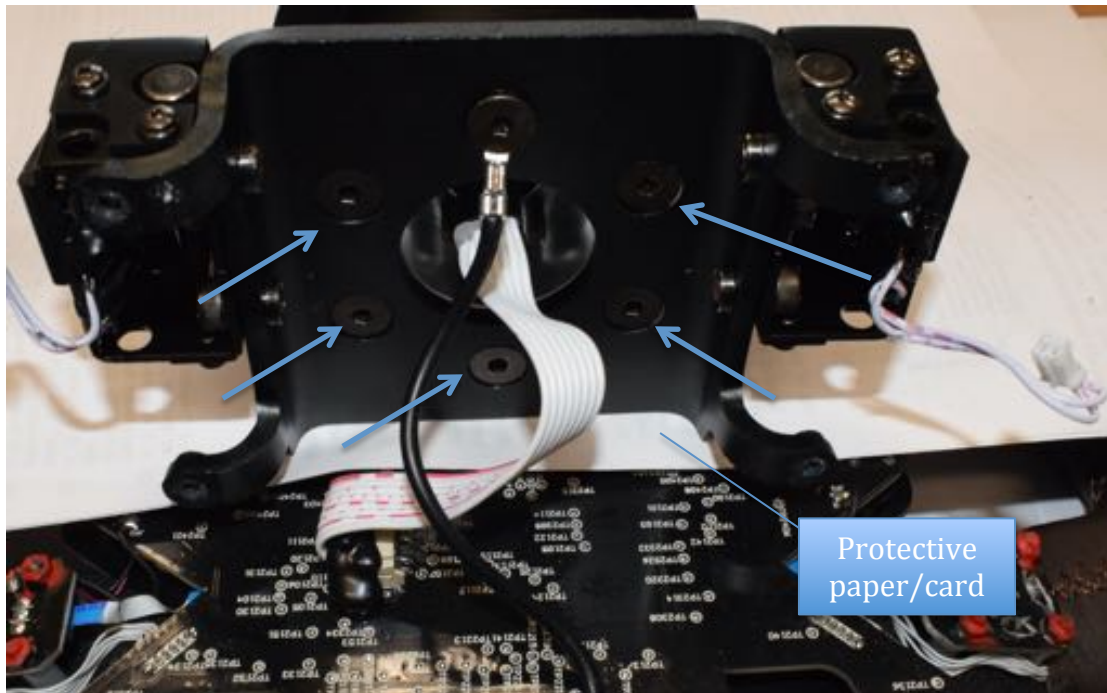
4. Remove the four hex screws from the front of the wheel.



5. Next, lift up the rear part of the wheel and remove the 2 pin shifter cables from each side.

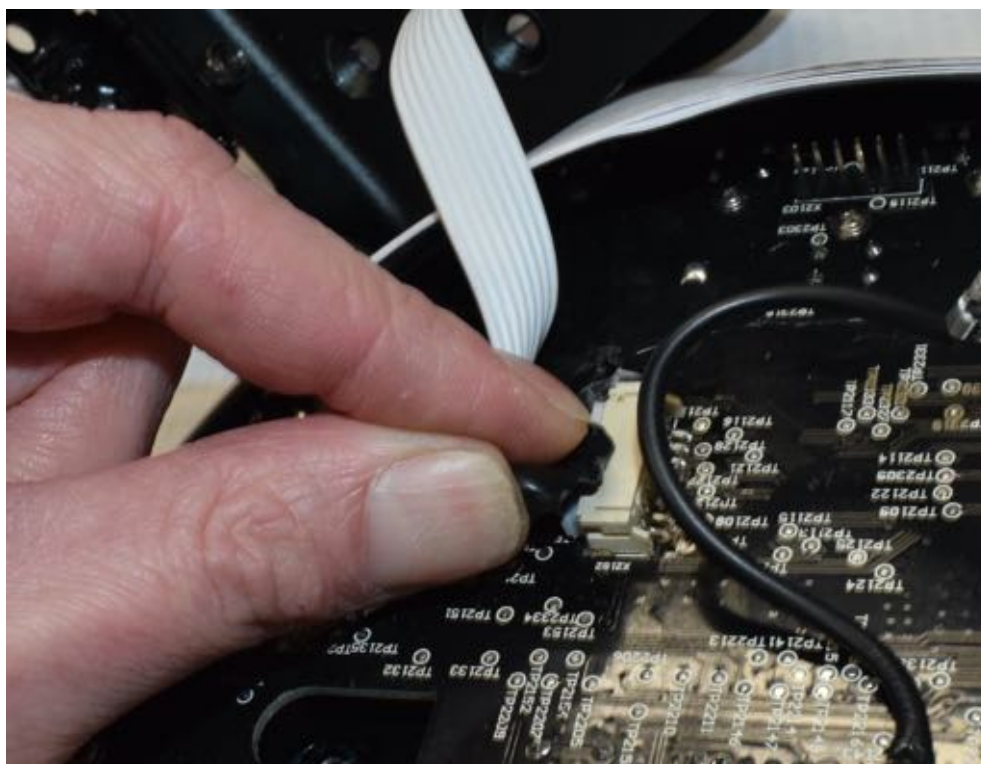


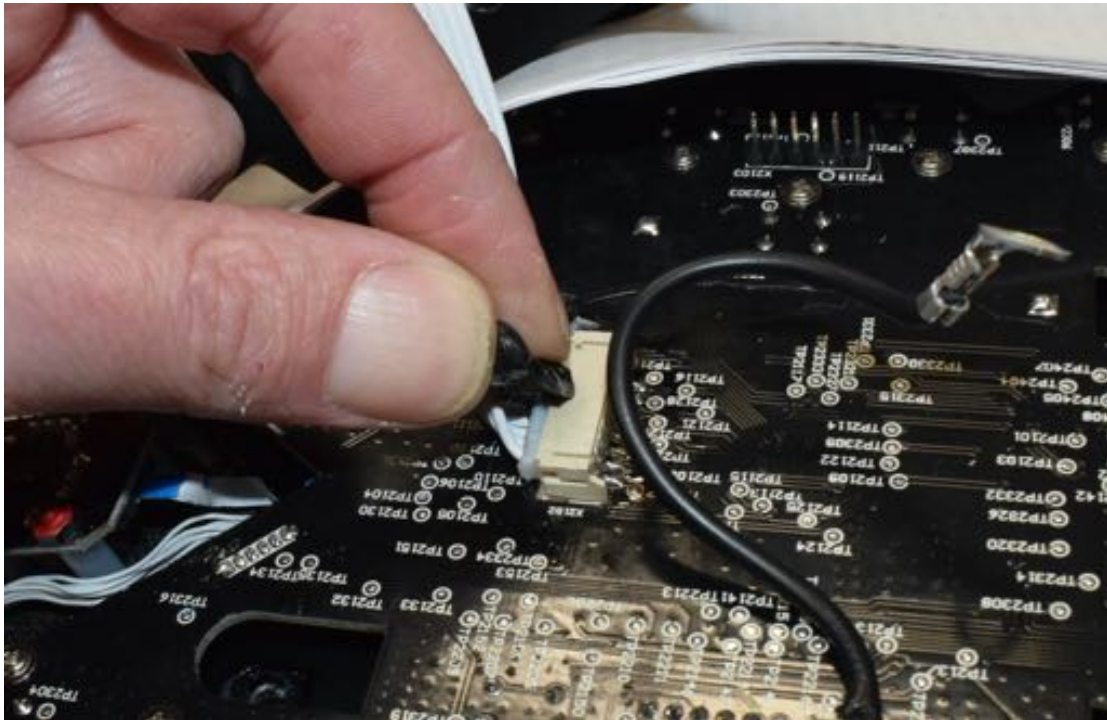
I found it best to use some long nose pliers and taking my time. When this is done, pull the rear part of the wheel away from the front and place on some protective paper or card as shown.



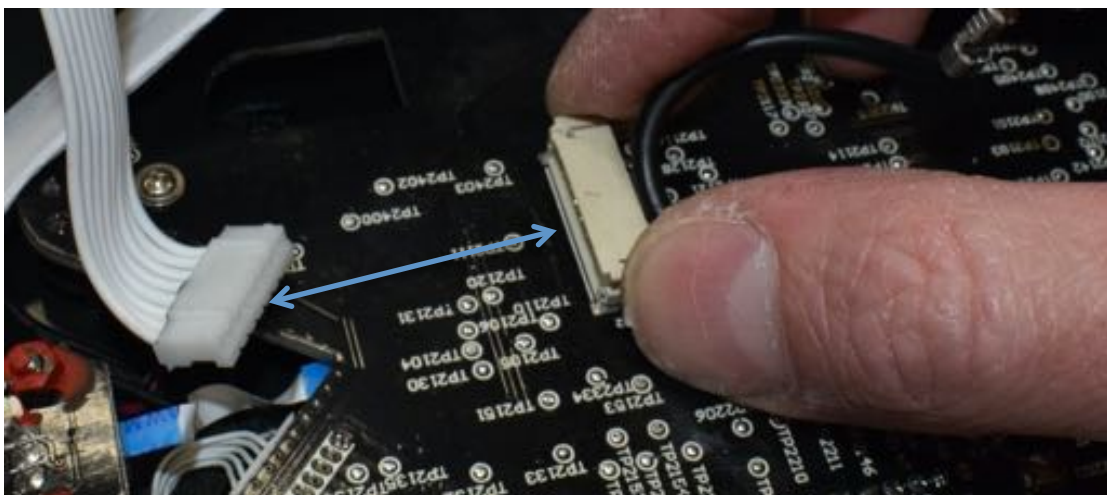
6. Remove the 6 hex screws (identified above) from the underside of the rear part of the wheel.

7. Remove the glue from the 8 pin connector of the PCB. Try to do this by rolling the glue along, as a pose to pulling vertically away from the PCB.





8. When all the glue is removed, pull the connectors apart. To avoid pulling the entire connector off the board, use both hands. One on the PCB connector, and one on the cable connector. I used my left hand to pull on the cable connector, and my right hand to hold the connector on the PCB.

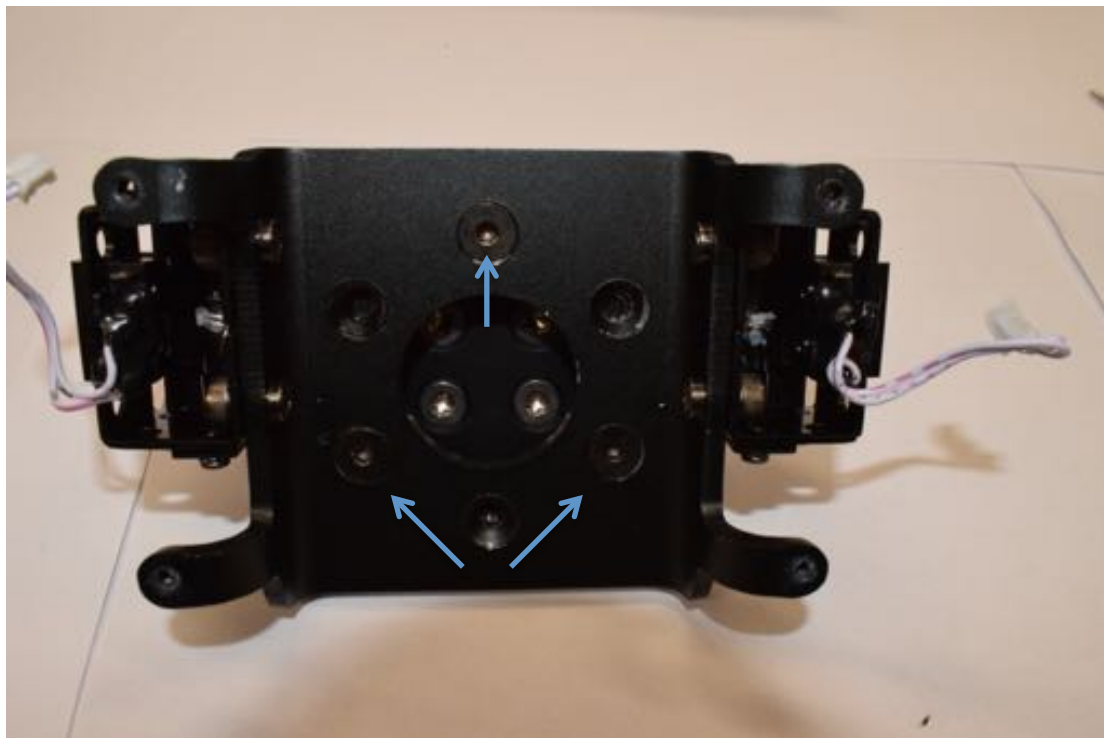


9. When the rear part is completely disconnected remove the Fanatec base adaptor completely as this is now surplus to requirements.

10. With the rear part of the wheel, place your spacer (not supplied) on to it and screw in three of the six hex screws removed in part 6. Note that not all six holes will line up, don't worry this is not a problem as the quick release will populate

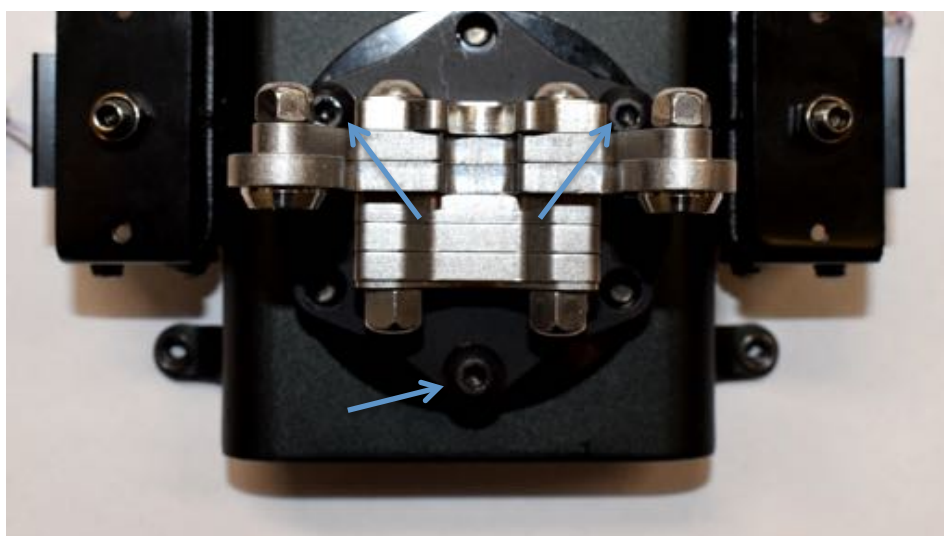
the remaining three holes. It is recommended that you use a threadlocking glue on your hex screws. These are especially important as you will not easily be able to get to these to tighten them up.





11. When the spacer is attached, place on your quick release wheel side adaptor. We will refix the top hex screw with the earth wire when the two halves are back together again.

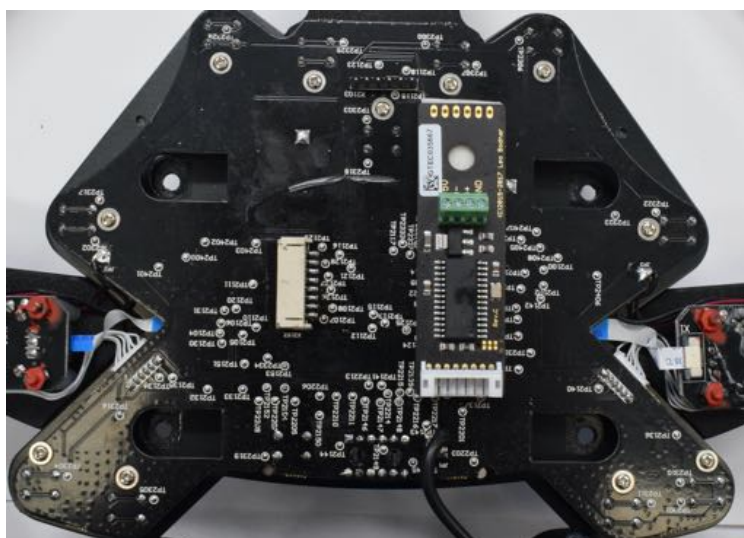
12. On the rear of the spacer, place your quick release 'wheel side' mount, fit into place with the three remaining holes. We recommend using threadlocker here to. Make sure to get the adaptor the right way up.



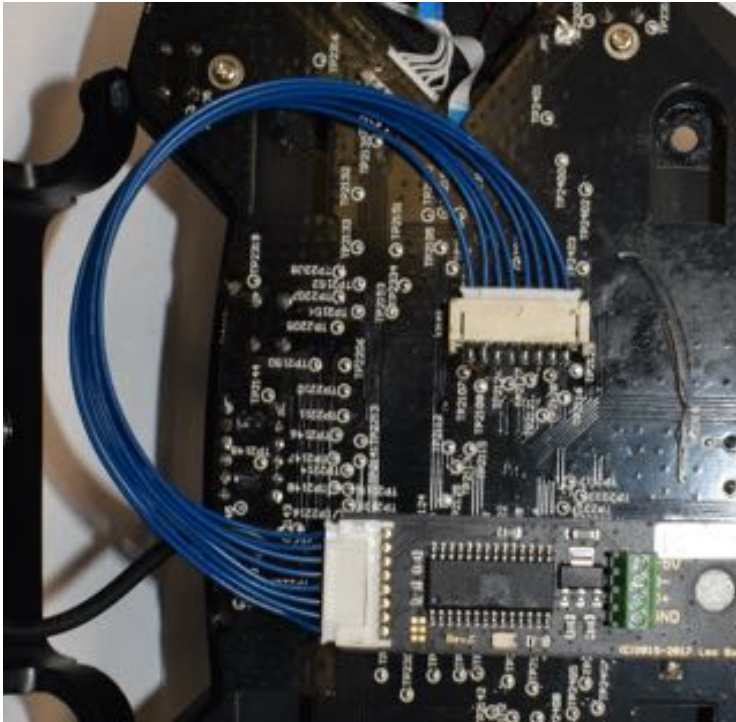
13. When the quick release is attached to the rear part of the wheel, bring the two halves together and re-attach the earth wire, remembering to place the metalwork onto some protective paper.



14. Find a suitable place for the conversion circuit board and fix onto the main PCB. Our chosen location is shown below. Make sure that you give the PCB enough clearance from the metalwork, which will cover the PCB.



15. Place the 8 pin to 8 pin connector into the socket on the main PCB and the conversion PCB. Make sure to hold the connectors on the PCB to eliminate strain on the soldered contacts.



16. Place a cable tie base onto the PCB and cable tie the 8 blue cables to keep all cables clear of the rear metal piece which will come over the top.



17. Find a suitable place in the plastic case for a 12mm hole for the USB cable and gland to enter the rear of the wheel.



18. Fit the gland and cable through the hole and insulate the loose shield wire of the USB cable.

19. Screw in the USB cables with the following pinout:

| | |
|-----|-------|
| +5V | Red |
| D- | White |
| D+ | Green |
| GND | Black |
| | |



20. At this stage it would be a good idea to make sure there are no electrical obstructions or electrical shorts on the board after working on it and test with Windows to make sure that all of the buttons and joysticks work. When you are happy that Windows is seeing all of the inputs. Replace the shifter paddles and rear cover.





22. Congratulations! You now have a Standalone Fanatec Porsche 918 RSR Wheel. Go and win some races!

